

GMVM97
MODULATING GAS FURNACE

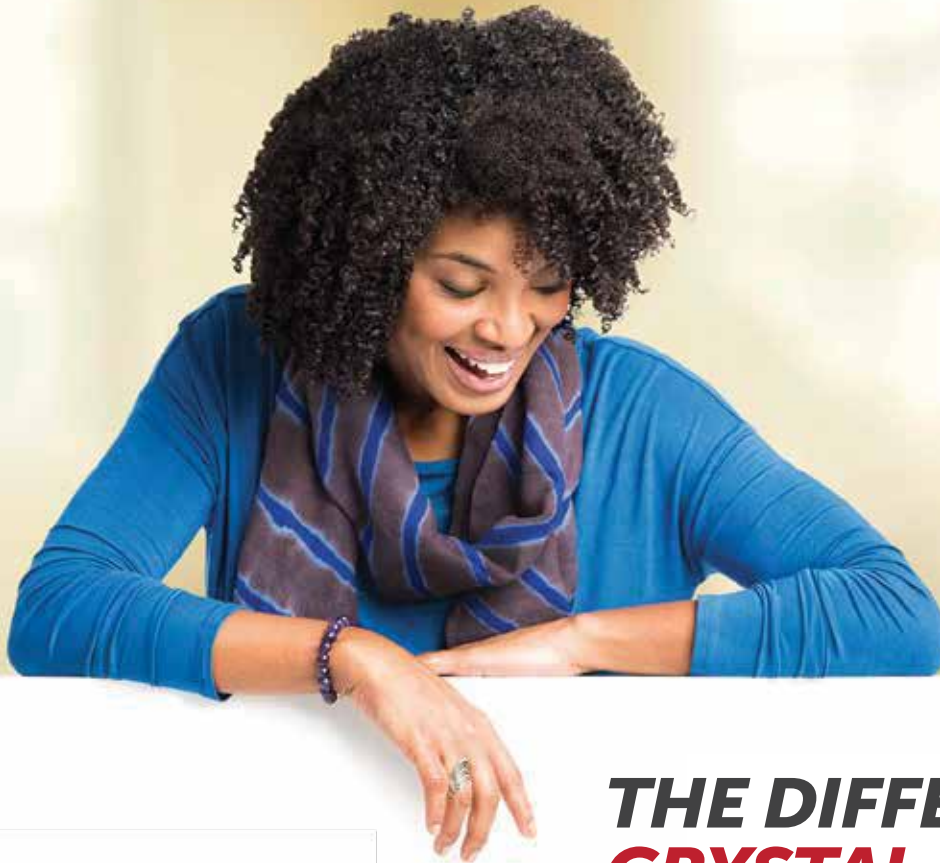
Crystal
HEATING & COOLING

Goodman
Air Conditioning & Heating

HIGH-EFFICIENCY, VARIABLE-SPEED ECM

UP TO 98% AFUE PERFORMANCE

Upflow/Horizontal



**THE DIFFERENCE IS
CRYSTAL CLEAR.**



At Goodman, we believe in American dependability. Units are designed, engineered and assembled in the U.S.A.





Goodman is one of the biggest names in home heating and energy-efficient home comfort. That's because Goodman lives up to its name in a big way, with time-tested energy-efficient technology, highly-durable materials and spot-on manufacturing. So, no matter where you live or whether your home is small or large, Goodman probably has a gas furnace to help keep your home warm and comfortable.

Goodman is a brand you can really warm up to.

The best gas furnace is the kind you don't have to think or worry about. It comes on the moment you need it and then runs quietly and efficiently all winter long as needed. The **Goodman** GMVM97 is loaded with features designed to provide outstanding performance for years to come. We use advanced techniques and materials so you know the cozy, even heat you feel in every corner of your home is an energy-efficient warming trend that's designed to stay for many years.

Don't high utility bills make you hot under the collar?

High heating bills burn us up, too. Our complete line of gas furnaces are priced to help add comfort to your budget from Crystal Heating and Cooling. And that's only the beginning. We want you to smile every time you open your utility bill, so we design into our units proven energy-efficient technology.

Taking pride in our company heritage.

Goodman brand heating and cooling systems are designed to provide refreshingly affordable and energy-efficient indoor comfort solutions using advanced technology. But the company ultimately adheres to some old-fashioned values too. Goodman believes in the integrity of the American worker. That's why **Goodman** brand heating and cooling systems are designed, engineered and assembled in the United States.

Experience reliable indoor comfort for everyone in your home winter after winter after winter.





A LOT GOES INTO EVERY GOODMAN BRAND GMVM97 GAS FURNACE

The art of precision

Aluminized Steel Tubular Primary Heat Exchanger – Distinctive tubular aluminized steel construction formed using wrinkle-bend technology results in an extremely durable heat exchanger. Paired with a stainless-steel secondary heat exchanger, this combination provides reliability, durability and efficiency.

ComfortBridge™ Technology – Continuously monitors system performance for customized indoor comfort.

The CoolCloud™ HVAC app – Enables qualified technicians to connect, configure and diagnose select HVAC systems quickly and accurately.

Goodman gas furnaces simply work the way they're supposed to, making each one a thing of beauty.

Self-Calibrating Modulating Gas Valve – Auto-configures for each installation.

Durable Silicon Nitride Igniter – Eliminates the need for an energy-wasting pilot light.

Quiet, Variable-Speed, Induced-Draft Blower – Provides precise control and enhanced energy-efficient performance as compared to a natural draft furnace.

Self-Diagnostic Control Board – Continuously monitors the system for consistent, reliable operation, stores last diagnostic codes in memory; and indicates condition through a 7-segment display for quick troubleshooting.

Thermally-Insulated Cabinet – The fully insulated cabinet means air leakage of less than 2% to maximize the heat transfer efficiency and lower blower noise.

THE DIFFERENCE IS CRYSTAL CLEAR.

COMPONENT UPGRADE OFFERS BETTER PERFORMANCE

The aluminized steel, tubular primary heat exchanger featured in Goodman brand gas furnaces is likely the most essential component in a gas furnace's performance. This distinctive heat exchanger employs wrinkle-bend technology which was developed to deliver extraordinary durability and long-term reliability.



STAY CONNECTED WITH COMFORTBRIDGE™

ComfortBridge™
technology 

ComfortBridge off-the-wall communicating technology constantly monitors the performance of a high-efficiency heating and cooling system. As **ComfortBridge** technology gathers data, it uses it to make automatic adjustments, as needed; to use the minimum amount of energy required to create consistent and comfortable indoor heating and cooling. Rather than installing the communications technology circuit board in the thermostat (which is connected to an inside wall in a home), the **ComfortBridge** circuit board is securely installed in the indoor unit of the energy-efficient heating and cooling system. **ComfortBridge** technology works with any single-stage thermostat to help create customized indoor comfort specifically for you and your family.



COUNT ON OUTSTANDING LIMITED WARRANTY* PROTECTION

10 YEAR UNIT REPLACEMENT LIMITED WARRANTY*

LIFETIME HEAT EXCHANGER LIMITED WARRANTY*

10 YEAR PARTS LIMITED WARRANTY*

* Complete warranty details available from Crystal Heating and Cooling or at www.goodmanmfg.com. To receive the 10-Year Unit Replacement Limited Warranty, the Lifetime Heat Exchanger Limited Warranty (good for as long as you own your home) and 10-Year Parts Limited Warranty, online registration must be completed within 60 days of installation. Online registration is not required in California or Quebec.



ENERGY STAR® and the **ENERGY STAR** mark are registered trademarks owned by the U.S. Environmental Protection Agency. **ENERGY STAR** products are third-party certified by an EPA-recognized Certification Body. Products that earn the **ENERGY STAR** prevent greenhouse gas emissions by meeting strict energy efficiency guidelines set by the U.S. Environmental Protection Agency.

PERFORMANCE

UP TO
98%
AFUE

The 98% AFUE rating on this gas furnace means that 98 cents of every energy dollar warms your home. The Department of Energy (DOE) established the AFUE (Annual Fuel Utilization Efficiency) system to calculate the annual operating cost of residential gas furnaces.

Independent, dependable, courteous, prompt, honest, highly-skilled and respectful of you and your home. That's why all the time homeowners say,

"THE DIFFERENCE IS *CRYSTAL CLEAR.*"



Why does Goodman have such a large fan base?

Many of your neighbors may have discovered that a reliable and energy-efficient home comfort system doesn't have to cost a fortune. **Goodman** brand whole-house systems feature many of the latest and greatest money-saving technology benefits that we can offer. They are designed and engineered to run quietly and pretty much worry-free.

EXTENDED SERVICE PLANS AVAILABLE

For even greater peace-of-mind, ask Crystal or visit our website at www.goodmanmfg.com for more details about **AsureSM**, an affordable Parts and/or Labor Extended Service Plan for your entire **Goodman** brand HVAC system.

AsureSM
EXTENDED SERVICE PLAN

Ask Crystal Heating and Cooling for full details.

ONCE YOU CHOOSE THE **GOODMAN BRAND**, YOU'LL PROBABLY BE A FAN FOR LIFE.



YOU COULD BECOME ONE, TOO!

Just go to www.goodmanmfg.com/reviews and find out why you'll say "Thank goodness for Goodman®."



Practical Home Automation

The ComfortHome™ suite of automation products provides the solution to control your home's vital systems from your smartphone – instantly notifying you of potential issues and providing you with the tools to act quickly.



www.comforhomeconnect.com

Pure. Clean. Air.

Indoor comfort in your home is about more than just adjusting the temperature on the thermostat. Many homeowners overlook the need for necessary components and systems that can improve the indoor air you breathe.



www.cleancomfort.com

GOODMAN IS SOCIAL!

Like us on **Facebook!**
facebook.com/GoodmanMfg

Follow us on **Twitter!**
twitter.com/Goodman_Mfg



GOODMAN – A MEMBER OF DAIKIN GROUP

Daikin Industries, Ltd. (DIL) is a global Fortune 1000 company. It is a worldwide leader for residential and commercial HVAC. DIL is engaged primarily in the development, manufacture, sale, and aftermarket support of heating, ventilation, air conditioning and refrigeration equipment, refrigerants and other chemicals, as well as oil hydraulic products. DIL is headquartered in Osaka, Japan.

The company provides innovative, premium quality indoor climate management solutions to meet the changing needs of residential, commercial, and industrial customers.



Additional Information

Before purchasing this appliance, read important information about its estimated annual energy consumption, yearly operating cost, or energy efficiency rating that is available from Crystal Heating and Cooling.



55 Plant Farm Blvd.
Brantford, ON N3S 7W2
Call us at: 519-756-6888 or visit
www.crystalheatingandcooling.ca

Our continuing commitment to quality products may mean a change in specifications without notice. © 2018 Goodman Manufacturing Company, L.P. Houston, Texas • USA
www.goodmanmfg.com

